

2016

LCR Handbook
for
Local Church Representatives
of the
Florida United Methodist Children's Home



**FLORIDA UNITED METHODIST
CHILDREN'S HOME®**

ESTABLISHED 1908

Dear Friends,

As a local church representative, you are one of the greatest assets to the Children's Home. The service and commitment that you give to the Children's Home is invaluable.

Thank you for sharing this journey with us as we seek together to follow God's vision for this organization. Thank you for your talents, interest and spiritual gifts you give to the Children's Home. Your work as a LCR will have a profound impact on the lives of some of God's most precious children.

We are blessed to have you be part of this incredible ministry!

Becky Dotson
President and CEO



Welcome

Thank you for volunteering to become a Local Church Representative for the Florida United Methodist Children's Home. This booklet is provided so you may know how to interpret the mission of the Children's Home and how to involve your congregation in this ministry with children and youth in crisis.

Your job is fourfold:

1. To educate yourself about the mission of the Florida United Methodist Children's Home and to work with your Pastor to communicate that mission to your congregation to develop support for the Home through the Fifth Sunday and Christmas Offerings.
2. To inform yourself about the needs of the Children's Home and to encourage your church members to donate financially.
3. To invite your church members to visit the Children's Home and to become volunteers.
4. To work with your Pastor to make connections between children, youth, and families in crisis and the Children's Home.

The Children's Home has materials that will be helpful in your work. These include THE HERALD magazine (3 times a year), The LINK (the monthly LCR Newsletter), various brochures highlighting different aspects of our ministry, bulletin inserts and pew envelopes for the Fifth Sunday Offering, videos, and a comprehensive website at www.allchildrenfirst.org.

The Church Relations Department also schedules annual training events in each district so that you can be prepared for your responsibility as the Local Church Representative.

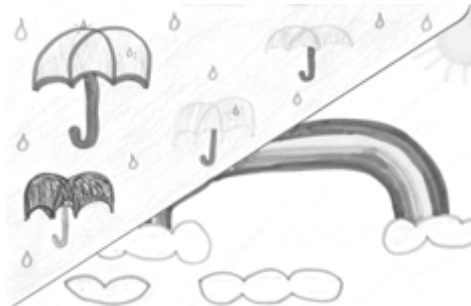
Your Children's Home staff contacts are:

Rev. Stephen Hartsfield, Director of Church Relations

stephen.hartsfield@fumch.org
386-668-4774 Extension 2222

Trista Calvin, Local Church Relations Manager

trista.calvin@fumch.org
386-668-4774 Extension 2296



EDUCATE YOUR CHURCH ABOUT THE CHILDREN'S HOME AND ITS MISSION

We stand ready to assist you and your church to be in ministry to the children and families in our care. We can provide the following:

- **Preach in your church at the pastor's invitation**
- **Provide a mission moment during a worship service**
- **Make a presentation to Sunday School class, fellowship dinner, United Methodist Women's or Men's group or any group in your church**
- **Provide a display for a mission fair or other function**
- **Provide newsletters, brochures and other materials for you to share and help tell the story and promote the Children's Home**
- **Campus tours are always available**
- **Provide opportunities for work groups and volunteers**
- **Comprehensive website at www.allchildrenfirst.org**

Church Goal of Giving Explained 2016 Goal is \$12.00 per member

Since 1961, a goal of giving based on church membership has been established for each local church in the Florida Annual Conference. This goal of giving provides each church with a base level of support they can strive for and encourage their members to meet.

The goal of giving is established in two ways. First, at the Florida Annual Conference each year, the per member goal of giving is voted on by the delegates to the Annual Conference. The conference also approves the collection of Fifth Sunday Offerings during the next conference year. Since 2007, the per member goal of giving has remained at \$12.00 per member. The goal will be \$12.00 per member for 2016. We think this is a very reachable goal for every church. We hope each member can give an average of \$1.00 a month to support the ministry of the Florida United Methodist Children's Home.

Second, your local church submits end of year reports and statistical information to the Annual Conference. Included in this report is the membership figure of your local church. Once those figures are compiled, we request those figures from the conference office. Then the \$12.00 figure is multiplied by the number of members you reported. Therefore, a 500 member church will have a goal of \$6,000 for the calendar year.

If you have any question about the goal of giving, you are welcome to contact Reverend Stephen Hartsfield, Director of Church Relations at 386-668-4774 or stephen.hartsfield@fumch.org

BASIC COMPONENTS OF OUR MINISTRY

Residential Care

The children live in one of thirteen homes on our Enterprise campus; each home provides a home for eight to ten boys or girls. The children usually live two to a room and are responsible for keeping their rooms clean, doing various chores, completing homework and managing day to day life in the cottage. They eat family style and enjoy the comfort of a loving home. Two sets of house parents (one couple on duty at a time) ensure a stable, secure and home-like atmosphere. The average stay of a child is about 12 to 18 months, but some will remain for much longer depending upon circumstances.

Emergency Shelter Care

This program aims to stabilize children who need immediate care and prepare them for their next placement. The program incorporates many elements to insure that the immediate needs of the child are met along with providing them with a holistic approach to treatment encompassing our various services including educational, therapeutic, clinical, recreational and spiritual life. School is provided on campus for residents in Emergency Shelter Care in our Aldersgate Academy. This program is housed in Chatlos-Quillian Home.

Therapeutic Group Home

These homes are designed as a more intensive setting for residents who need a high level of attention. They typically are stepping down from a more restrictive environment.

North Campus—Madison Youth Ranch

What began four years ago as a prayer to help more of God's children find a place of healing and wholeness has now become a reality. Our north campus is open and youth are living in the first two residential homes, along with a recreation area, outside prayer chapel and administrative offices. A Service of Dedication took place on September 23, 2014. This second campus offers the same basic services as the Enterprise campus with the inclusion of a horse therapy program, along with many additional outdoor activities on 400+ acres.

To learn more about our Madison campus, arrange for a tour, or to discover how you can help, contact Ruth Moore, Administrator of the Madison Youth Ranch, at ruth.moore@fumch.org or at (850) 929-3000. You can also contact Elisabeth Gadd, Vice President for Development at elisabeth.gadd@fumch.org or at 386-668-4774.

Independent Living Program

Kaebnick Home, located across the street from our main campus, is our home for residents who have aged out of traditional group home care, yet who for various reasons are not able to live successfully on their own in the community. Residents are coached and mentored by resident advisors living in the home, and can remain in care for an additional 2 years. Independent Living also offers partial college scholarships, as well as emergency assistance funds to young alumni. Alpha House and small retreats provide additional housing for our Independent Living Program.



Legacy Scholars Academy

Legacy Scholars Academy opened its doors on August 24, 2015. Our on-campus Volusia County public school currently has over 35 students. Many of our campus residents still attend local public schools. In addition to the rigorous academic curriculum, the school also has a focus on the social and emotional learning of our students that is vital to their overall success. Classrooms, computer lab and other resources for Legacy Scholars Academy are located in our gymnasium. Aldersgate Academy serves our residents in our Emergency Shelter Care program.

Foster Care

The Florida United Methodist Children's Home began the Foster Parent Program in 2002. Specialized training is offered throughout the year to train potential foster parents to work with the Children's Home staff in providing a nurturing, family oriented environment for children in need of a substitute family. The foster parents, with the guidance and support of the Children's Home staff, assist the children in developing basic life skills and values necessary to become contributing, productive adults. Satellite offices are to be found in three locations. An office on our campus serves Volusia and Flagler Counties. Our office in Tampa serves Hillsborough County. In January of 2016 we anticipate opening an office in Southwest Ranches that will serve Broward County and Palm Beach County.

Career Development

The Career Development Program integrates academic learning with practical skill training and allows our residents to explore, refine, and fortify their God-given gifts and interests. Our residents not only gain a competitive advance in career fields that are constantly seeking a skilled labor force, but also provides them with valuable skills for life after the Children's Home. Our Career Development Center includes Carpentry, Automotive Technology, Cosmetology and Culinary Arts.

Early Childhood Development Center

"In As Much" is the Children's Home Early Childhood Development Center, which opened in 1980. It is one of the pioneer early childhood daily educational programs in our county and is open to the community for children from 6 weeks to 5 years of age. It is committed to achieving the highest standard of practice and currently holds three accreditations – COA (Council on Accreditation), APPLE (Accredited Professional Preschool Learning Environments), and Gold Seal – the highest recognition from the Florida Department of Children and Families. It also sponsors an after school program and summer camp program to serve kids in the community from Kindergarten through 5th grade.

Heart & Home Resale Shop

The Heart & Home Resale Shop is open for business. The shop is located in Orange City, Florida at 2460A South Volusia Avenue in the Four Townes Shopping Center. Our Heart & Home Resale Shop is a new opportunity for churches, groups and individuals to support our ministry. We need a steady contribution stream of gently used items to sell in the store. Items we cannot accept include paint, pesticides, household chemicals, used mattresses and any recalled items. Please make sure items are clean and in working order. The new shop also creates a whole new area for volunteer opportunities. For more information about the new shop, you can contact Jennifer Lichtenwald at (386) 668-4774 or jennifer.lichtenwald@fumch.org. For questions about volunteer opportunities please contact Lynn Bellomy at (386) 668-4774 or lynn.bellomy@fumch.org.

ENCOURAGE YOUR CHURCH MEMBERS TO DONATE FINANCIALLY TO THE CHILDREN'S HOME

Fifth Sunday Offering

The bedrock of our financial support is the historic Fifth Sunday Offering. Every local church in the Florida Annual Conference should receive this vital offering. For 2016, the goal of giving will remain at \$12.00 per member. This important income helps us pay the daily expenses of taking care of the children, youth and families in our care.

Direct Giving

Many people choose to send their support of the Children's Home directly to us. You can designate what church you would like to receive credit for your gift. Your gift then goes toward your church's total goal of giving for the year. You may also wish to make donations online at www.allchildrenfirst.org.

Honor and Memorial Gifts

Many people make direct contributions to the Children's Home in honor or memory of a loved one. A card is sent to the recipient or family to acknowledge your act of generosity. All honor and memorial names will also be listed in a special edition of The Herald.

Appeal Letters

Appeal letters are sent to selected people throughout the year. As a Local Church Representative, you will receive every appeal letter. This will allow you to promote our current needs in your local church.

Path of Hope

The Path of Hope is located in front of our Chapel. Your church members, or groups, can purchase a brick in honor or memory of a loved one. You can also honor a church or organization. All gifts are placed in a Permanent Endowment Fund. For more information, or to request a brochure, contact our Development Office at 386-668-5088.

In-kind Giving and Needs List

Many people, businesses and organizations give needed items directly to the Children's Home. We can provide a "Needs List" for you to promote this type of giving to the Children's Home. Please remember that, because of connections and buying power, we can typically make a dollar stretch much farther than most individuals.

Estate and Planned Giving

Individuals, couples and families interested in leaving the Florida United Methodist Children's Home in their estate or creating some type of planned gift should contact Jeanne Griffith, Director of Strategic Partnerships at jeanne.griffith@fumch.org or at 386-668-4774.

INVITE YOUR CHURCH TO VISIT THE CHILDREN'S HOME AND TO BECOME VOLUNTEERS

Plan a Campus Tour

Campus tours are available simply by making a reservation online at www.allchildrenfirst.org or by calling our Development Office at 386-668-5088.

Day On Campus

Attendance at the Day On Campus (DOC) event provides a personal connection with the Children's Home. It is a festive day which includes tours of the campus, a program featuring the residents, a picnic lunch under a big top tent and the fellowship of other United Methodists from around the Conference. It's a great way to introduce people to the Children's Home. The schedule of invited districts for the next four years is:

April 9, 2016 – **East Central, South West**

2017 Date to be Determined – **Gulf Central, South Central**

2018 Date to be Determined – **North West, North Central, North East**

2019 Date to be Determined – **Atlantic Central, South East**

Individual Volunteers

Volunteers are needed throughout the year to help the Children's Home with such tasks as preparing the Fifth Sunday mailings and other projects. Contact Lynn Bellomy, Volunteer Coordinator, at lynn.bellomy@fumch.org or at 386-668-4774.

Volunteer Work Groups from Local Churches

Volunteer work groups are welcome to visit for a week or a weekend or even a day and perform needed work on our campus. These groups are able to experience the mission of the Home by contributing physical labor and assisting the Home to complete various projects on campus. This allows us to stretch our dollars and helps us continue to be the best stewards of the resources entrusted to us. Contact Lynn Bellomy at lynn.bellomy@fumch.org or at 386-668-4774.

Volunteer at Events

Many volunteers are needed for our special events (Santa's Workshop, Day On Campus, Foster Care Appreciation Day, etc.)



KEY STAFF MEMBERS

Below is a list of some of the key staff members at the Children's Home that you might need to contact in the course of your work. All of them can be reached by calling the main Children's Home number at (386) 668-4774.

Becky Dotson

President/CEO

Becky is in charge of the overall program and ministry of the Children's Home. She would enjoy hearing from you.

Elisabeth Gadd

Vice President for Development

Elisabeth gives leadership and direction to the entire development and fund raising efforts of the Children's Home. If you have any questions, thoughts or concerns she would appreciate hearing from you.

Yolaine Cotel

Clinical Placement Specialist

Yolaine is the person you would contact about placing a child in care at the Children's Home, or to ask about the services we provide for children and families.

Trista Calvin

Community Relations Manager

As a Local Church Representative, Trista is your primary contact with the Children's Home. Please feel free to contact her with any questions, requests or needs.

Stephen Hartsfield

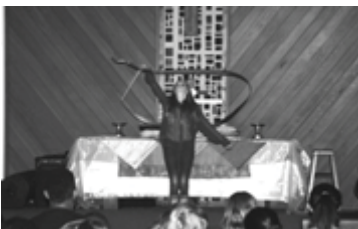
Director of Church Relations

Stephen is available to speak at your church and to assist you in your work as a Local Church Representative. Please feel free to also contact him with any questions, requests or needs.

Lynn Bellomy

Volunteer Relations Supervisor

Lynn is the person you would contact about volunteering at the Children's Home. She will be able to answer your questions about ongoing volunteers, special event volunteers and work groups from local churches. Please don't hesitate to contact Lynn about volunteering.



The “Five C’s” of a Local Church Representative

Commit – to making the Florida United Methodist Children’s Home the greatest outpouring of Christ’s love on His children through your prayers, presence, gifts, service and witness.

Communicate – The Children’s Home story by being the “Chief Cheerleader” of the organization. Connect people to the Children’s Home within your sphere of influence. Create a “top of mind awareness” by communicating the Children’s Home message to your local church. Communicate, invite and actively participate in the annual Day On Campus. Attend the annual district training events for Local Church Representatives.

Contribute – Generously to the Florida United Methodist Children’s Home with your time, strengths and resources.

Collect – “Gift-in-Kind” items providing everyone regardless of income level an opportunity to share in the joy of giving to the children.

Coordinate – People and opportunities by recruiting volunteers from your local church to participate in specific Children’s Home activities and events. Host an event in your local church to benefit the Florida United Methodist Children’s Home.



Suggested Collection Schedule of Needed Items and Important Dates for 2016

January

Receive Fifth Sunday Offering materials for January 31, 2016
Collect hygiene items (toothbrush, toothpaste, shampoo, deodorant, tissues, etc.).
Attend an LCR Training Event in your district.
Receive the first issue of The Herald.

February

Collect socks, underwear and undershirts (primarily for middle and high school aged youth).
Attend an LCR Training Event in your district.
Receive Valentine Appeal Letter.

March

Receive Easter Appeal Letter.

April

DAY ON CAMPUS is April 9, 2016. Especially invited districts are South West and East Central
Collect diapers and wipes for independent living program and foster care ministry.
Collect Target and Walmart gift cards for Chapel supplies.

May

Receive Fifth Sunday Offering Materials for May 29, 2016.
Collect sun block, swim trunks, one piece girl's swimsuits, swim goggles and other pool toys.
Observe National Foster Care Month.

June

Summer Break begins on June 7.
Receive second issue of The Herald.
Summer Fun Program kicks off.

July

Receive Fifth Sunday Offering Materials for July 31, 2016.
Collect school supplies for residential care and foster care.
Receive Back to School Appeal Letter.

August

School begins on August 15.
Collect laundry baskets and towels and washcloths

September

Receive third issue of The Herald

October

Receive Fifth Sunday Offering Materials for October 30 2016.
Collect Alarm clocks (without radios), batteries of all sizes.
Promote Christmas and begin to collect gift cards for the residents.

November

Continue to collect gift cards for Christmas for our residents.
Receive Christmas Appeal Letter.

December

Receive Christmas Offering Materials.
Please deliver gift cards by December 9, 2016

AFFILIATIONS AND AWARDS



COA is an international, independent, not-for-profit, child- and family-service and behavioral healthcare accrediting organization. Among the service areas are substance abuse treatment, adult day care, services for the homeless, foster care, and intercountry adoption.



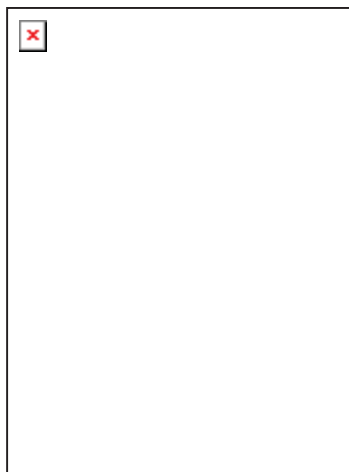
The Florida United Methodist Children’s Home is licensed by the State of Florida as a Child Placing/Child Caring Agency by the Department of Children and Families. In order to operate our residential, foster care and adoptions programs we are required to comply with state licensing requirements (DCF).



EAGLE – The **Educational Assessment Guidelines Leading toward Excellence**, or *EAGLE* Accreditation Commission, is designed for faith based, health and wholeness organizations to enhance the quality of services provided. It utilizes voluntary self-assessment and peer review processes based upon principles and goals to promote excellence in Christian Ministry.



UMA - The United Methodist Association of Health and Welfare Ministries (UMA) is a national association of United Methodist-related, and other faith-based ministries, and professionals actively related, and other faith-based ministries, and professionals actively involved in promoting quality care in a Faith-based setting. UMA is a national, non-profit network of approximately 400 health and human service organizations.



Chapel Window



Photo dated 1916