

LCR Handbook
For
Representatives of the
Florida United Methodist
Children's Home

2011



Welcome

Thank you for volunteering to become a Local Church Representative for the Florida United Methodist Children's Home. This booklet is provided so you may know how to interpret the mission of the Children's Home and how to involve your congregation in this ministry with children and youth in crisis.

Your job accent is fourfold:

- 1) To educate yourself about the mission of the Florida United Methodist Children's Home, and to work with your Pastor to communicate that mission to Church Staff, and your congregation to develop support for the Home
- 2) To inform yourself about the needs of the Children's Home, and to encourage your church members to donate financially
- 3) To invite your church members to visit the Children's Home, and to become volunteers
- 4) To work with your Pastor to make connections between children, youth, and families in crisis and the Children's Home

The Children's Home has materials to provide you in each of these areas, including newsletters, brochures, videos, 5th Sunday offering envelopes, and more. Please feel free to request promotional materials from us as needed. The Church Relations Department also schedules annual training events in your district so that you can become more prepared for your responsibility as the Local Church Representative. You are not alone!

Your Children's Home staff contacts, whom you may contact with any questions, are:

Rev. Stephen Hartsfield, Director of Church Relations

Stephen.Hartsfield@fumch.org

386-668-4774

Rev. Bess Bussey, Assistant Director of Church Relations

Bess.Bussey@fumch.org

386-668-4774



EDUCATE YOUR CHURCH ABOUT THE CHILDREN'S HOME AND ITS MISSION

Feel free to use the information from *THE HERALD* magazine (4 times a year), and *The LINK* (the monthly LCR newsletter) for your Mission Moments, your newsletter articles, Sunday Bulletin, or talks with other groups. Brochures, a one-minute informational DVD on the Home and a DVD on the history of the Children's Home are also available. These videos are also available on our website.

Request Mission Moments (3-5 minutes) during Sunday Worship Time or with Sunday School classes or other groups

Content may address:

- Programs the Home has for children/youth
- Stories of the difference your church's support is making in the children's lives
- Current issues and concerns or pressing financial needs
- What the staff is doing
- What the volunteers are doing

Write Brief Articles for Your Monthly Church Newsletter or Sunday Bulletin



Put in an interesting fact about The Children's Home in your church Newsletters or Sunday Bulletins, or write an article reminding your congregation of the Fifth Sunday Offering.

Invite a Children's Home Speaker to Your Church

A Children's Home representative can speak at a Worship Service, to a Sunday School class, Fellowship Dinner, Men's or Women's Groups, Mission Fairs, etc.

Create Displays and Bulletin Boards

Visual symbols draw attention to brochures and information about the Children's Home. Use pages or pictures from Children's Home publications to set up a display.

Display at Mission Fairs or Mission Celebration Events

Missions fairs are opportunities for the congregation to see the Children's Home as a mission, and provides information on who we serve and what a difference we make in the lives of Florida's children, youth and families.

Link Your Church's Website

Be sure that your church's website has a link to the Children's Home website at www.allchildrenfirst.org

Request Prayer Support for the Children's Home

- Pray for residents of a different cottage each month. Cottage names: Kaebnick, Waller-Jeter, Shannon, West Gilbert, East Gilbert, Bacon, Blanton, Carlton, Lang, Gayler, Fox-Wright, Fraser-Osteen and Chatlos-Quillian
- Pray for Foster Families
- Pray for Children's Home Staff

ENCOURAGE YOUR CHURCH MEMBERS TO DONATE FINANCIALLY TO THE CHILDREN'S HOME

Help identify potential donors, and encourage new givers through promotion of the following giving opportunities:

Fifth Sunday Offerings

The goal is \$12 per member per year. In your Mission Moment for the Fifth Sunday Offering, highlight one of the programs or pressing needs mentioned above.

Honors and Memorials for FUMCH

Have envelopes available in your church office for contributions. If the contributions are sent directly to the Children's Home, a letter will be sent immediately to the persons they designate. They can also designate what church they would like to receive credit. Online donations can also be made at www.allchildrenfirst.org.

The Path of Hope

The Path of Hope is located in front of the Chapel on the campus of the Children's Home. Your church members can purchase a brick in honor or memory of a loved one, or in recognition of a special occasion, and their gift will be placed in the Permanent Endowment Fund of the Children's Home. For further information, or to request Path of Hope brochures, contact Maria Rosenquest in our Development Department at Maria.Rosenquest@fumch.org, or at 386-668-5088.



Estate Planning

Individuals interested in leaving the Florida United Methodist Children's Home in their estate should contact our Director of Major and Planned Giving at 386-668-4774.

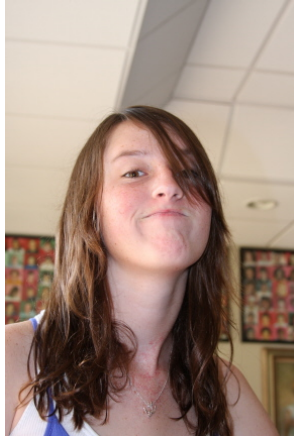
Appeal Letters

Appeal letters are sent to selected people throughout the year. As a Local Church Representative, you will receive every appeal letter, and can promote our current needs in your Mission Moments.

INVITE YOUR CHURCH MEMBERS TO VISIT THE CHILDREN'S HOME, AND TO BECOME VOLUNTEERS

Plan a Campus Tour

Campus tours are available simply by making a reservation online at www.allchildrenfirst.org.



Day On Campus

Attendance at the Day On Campus (DOC) event provides a personal connection with the Children's Home. The DOC Celebration is always the third Saturday of March each year. It is a festive day which includes tours of the campus, a program featuring the residents, a picnic lunch under a big top tent and the fellowship of other United Methodists from around the Conference. It's a great way to introduce people to the Children's Home. The schedule of invited districts for the next four years is:

- March 19, 2011 – Atlantic, South East
- March 17, 2012 – East Central, South West
- March 16, 2013 – Gulf Central, South Central
- March 20, 2014 – North West, North Central, North East

Individual Volunteers

Volunteers are needed throughout the year to help the Children's Home with such tasks as preparing the Fifth Sunday mailings and other projects. Contact Zoe Peterson, Volunteer Coordinator, at Zoe.Peterson@fumch.org, or at 386-668-4774.

Volunteer Work Groups from Local Churches

Confirmation classes, Sunday School classes, or other groups are welcome to visit for a week or a weekend, stay in our bunkhouse and perform mission work on our campus. These groups are able to experience the mission of the Home by contributing physical labor and assisting the Home to complete various projects on campus. This allows us to stretch our dollars and helps us continue to be the best stewards of the resources entrusted to us. Contact Rev. Denny McCullough, at Denny.McCullough@fumch.org, or at 386-668-4774.

Volunteers at Events

Many volunteers are needed for our special events (Christmas, Day On Campus, Foster Care Appreciation Day, etc.)

NOMADS

NOMADS are an organized group of people with RVs who are connected with the United Methodist Church who provide their time and skills for 3 weeks to benefit the Children's Home. NOMADS stands for Nomads On a Mission Active in Divine Service.



WORK WITH YOUR PASTOR TO MAKE CONNECTIONS BETWEEN CHILDREN, YOUTH, AND FAMILIES IN CRISIS AND THE CHILDREN'S HOME

You and your pastor are the connection the Children's Home and children, youth and families who may need our services. To make referrals of children who need care, contact the Children's Family Services Specialist, Lisa Nowell, at 386-668-4774, or at Lisa.Nowell@fumch.org.

YOUR 2011 CALENDAR AS THE LOCAL CHURCH REPRESENTATIVE

Also refer to THE LINK monthly newsletter for up-to-date information

JANUARY 2011

- LCRs in East Central District recruit volunteers for Day On Campus (DOC)
- Training sessions for LCRs
- Promote attendance for Day On Campus – especially in specifically invited Districts. Develop a travel plan for your church. Reserve church bus or van.
- January 30 Fifth Sunday Offering in each United Methodist Church in Florida

FEBRUARY 2011

- First week send in names & phone numbers of volunteer recruits for DOC (Atlantic Central, South East District)
- Continue to promote attendance at the Day On Campus (specifically invited districts for 2011: Atlantic Central, South East.) Dates for upcoming years will be listed in the *LINK*

MARCH 2011

- First Week - Turn in reservations for Day On Campus
- Easter Appeal letter is mailed
- Attendance at Day On Campus, March 19th, encourages a closer personal connection with The Children's Home

APRIL 2011

- April 24 - Easter Campus Brunch
- Mid April – submit article about the Children's Home for the local church newsletter
- Submit article for local church newsletter on 5th Sunday Offering
- April 30 – Alumni Reunion for younger alumni

MAY 2011

- First Saturday - Foster Care Appreciation Day on FUMCH Campus
- May 29 – Fifth Sunday Offering in each United Methodist Church in FL

JUNE 2011

- Annual Conference (See Children's Home Exhibit)
- Residents of the Children's Home attend Church Camp
- Summer Quest at FUMCH begins
- Submit article for local church newsletter on 5th Sunday Offering

JULY 2011

- July 4th Campus Fish Fry
- Back to School Appeal
- Summer Quest continues.
- July 31 - Fifth Sunday Offering in each United Methodist Church in FL

AUGUST 2011

- FUMCH Campus talent show – August 3
- Back to School

SEPTEMBER 2011

- Submit Children's Home article for local church newsletter
- Submit article for local church newsletter on 5th Sunday Offering

OCTOBER 2011

- Christmas Wish List ready- sent only upon request. Contact the Development Department at 386-668-5088.
- October 30 - Fifth Sunday Offering in each United Methodist Church in FL

NOVEMBER 2011

- Volunteer groups decorate the Children's Home Campus (Must be scheduled through the Volunteer Office, 386-668-4774.)
- Thanksgiving Dinner for Campus – November 24

DECEMBER 2011

- Santa's Workshop at Children's Home – December 3 (Booths provide opportunities for FUMCH kids to make presents for family or friends)
- Gift delivery to campus deadline – December 5
- Christmas Day Dinner for campus - December 25

FUMCH POINTS OF INTEREST

1. PATH OF HOPE

The Path of Hope is located in front of the chapel on the campus of The Children's Home. When you purchase a gift brick for the Path of Hope, your gift will be placed in the Permanent Endowment Fund of the Children's Home, and will continue to give and provide a home for children in perpetuity. A gift brick can be in honor or in memory of a loved one, in recognition of an anniversary, or for a special occasion or acknowledgment of a church, Sunday School Class or other group.

Brick sizes: \$100 for 4"x8"; \$500 for 8"x8"; \$1,000 for 16"x16". Path of Hope brochures which include a brick request form are available through the Development Department. For further information, contact the Development Department at 386-668-5088.

2. INDEPENDENT LIVING PROGRAM

One girl's cottage and one boy's cottage for residents ages 16 & 17 are specifically programmed as Transitional Living I Cottages where houseparent couples serve as primary caregivers. The focus of care is to teach residents social living skills in order to prepare them for a transition to independent living. Kaebnick Cottage now serves as the Transitional Living II Cottage serving residents ages 18-23. The purpose of this program is to continue to impart knowledge, education and real life experiences to residents who have aged out of traditional group home care, yet who for one reason or another are not able to live successfully on their own in the community. Residents are coached and mentored by resident advisors living in the cottage. Residents can remain in care for an additional 2 years.



3. FOSTER CARE

The Florida United Methodist Children's Home began the Foster Parent Program in 2002. Specialized training called MAPP (Model Approach to Partnership in Parenting) is offered throughout the year to train potential foster parents to work with the Children's Home staff in providing a nurturing, family oriented environment for children in need of a substitute family. The foster parents, with the guidance and support of the Children's Home staff, assist the children in developing basic life skills and values necessary to become contributing, productive adults. Satellite Offices were opened in 2009 in Orange/Osceola County, Tampa, and offices in East and West Volusia County.



4. DRIVER EDUCATION PROGRAM

The Children's Home now offers a Driver's Education Program as a step in preparing our residents for life after FUMCH. We have a state certified driving instructor. It is important that our young people learn the necessary skills to be safe and proficient drivers.

5. CAREER DEVELOPMENT

The Career Development Program will integrate academic learning with practical skill training and allow our residents to explore, refine, and fortify their God-given gifts and interests. Our residents will not only gain a competitive advance in career fields that are constantly seeking a skilled labor force, but it will also provide them with valuable skills for life after the Children's Home. Two parts of this development program were started in 2009: Construction Technology and Automotive Technology. Other planned programs for the future are: Cosmetology, Culinary Arts, and Horticulture.

6. EMERGENCY SHELTER/SCHOOL

This program aims to stabilize children who need immediate care and prepare them for their next placement, gearing them towards permanency. The program incorporates many elements to insure that immediate needs of the child are met along with providing them with a holistic approach to treatment encompassing specialized educational, therapeutic, clinical, recreational and spiritual services. School is provided on campus for residents in the Emergency Shelter.

7. CHILD CARE CENTER

“In As Much” is the Children’s Home childcare center, which opened in 1980. It is one of the pioneer/early childhood daily educational programs in the county and is open to the community for children from 6 weeks to 5 years of age. It is committed to achieving the highest standard of practice and currently holds three accreditations – COA (Council on Accreditation), APPLE (Accredited Professional Preschool Learning Environments), and Gold Seal – the highest recognition from the Florida Department of Children and Families. It also sponsors a summer camp program for school age children in the community and our foster children.

8. ALUMNI OF THE CHILDREN’S HOME

It is our hope that as children and youth leave The Children’s Home, they will find a local church in their new community that can become their home church. The seeds of hope that were planted here will continue to grow as these alumni find a new faith community, which just may be your church.

AFFILIATIONS AND AWARDS

- A Ministry related to the Florida Annual Conference of The United Methodist Church.
- A member of the Florida Coalition for Children.



4 star charity - The Children’s Home has received its 7th consecutive 4-star rating from Charity Navigator, an independent evaluator of charitable organizations that helps donors make informed choices about where their charitable donations will be used efficiently and responsibly. www.charitynavigator.com



BBB Accredited Business –This accreditation shows that we are committed to; upholding the principals of the BBB, adhering to truth in advertising, promoting self-regulation within our industry, abiding by local, state and federal laws and will help to resolve customer complaints.



COA is an international, independent, not-for-profit, child- and family-service and behavioral healthcare accrediting organization. Among the service areas are substance abuse treatment, adult day care, services for the homeless, foster care, and intercountry adoption.



UMA - The United Methodist Association of Health and Welfare Ministries (UMA) is a national association of United Methodist-related, and other faith-based ministries, and professionals actively involved in promoting quality care in a Faith-based setting. UMA is a national, non-profit network of approximately 400 health and human service organizations.



EAGLE – The Educational Assessment Guidelines Leading toward Excellence, or *EAGLE* Accreditation Commission, is designed for faith based, health and wholeness organizations to enhance the quality of services provided. It utilizes voluntary self-assessment and peer review processes based upon principles and goals to promote excellence in Christian Ministry.



The Florida United Methodist Children’s Home is licensed by the State of Florida as a Child Placing/Child Caring Agency by the Department of Children and Families. In order to operate our residential, foster care and adoptions programs we are required to comply with state licensing requirements (DCF).